



# Mercer+Mettle® Women's Stretch Jersey Long Sleeve Blouson Top MM1019



Delicately puffed blouson sleeves and a jewel neckline help create a feminine silhouette in this top that leans into a fashionable feel. Designed to be worn tucked or untucked, this flattering style is perfectly at ease in dressy or casual occasions.

**Fabric+Weight**

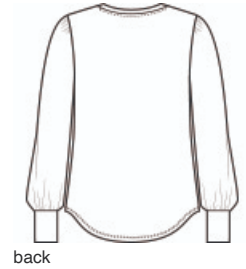
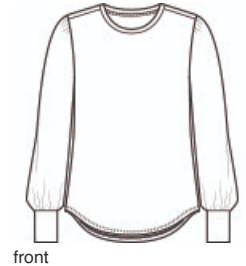
- 5-ounce, 92/8 polyester/spandex jersey

**Features+Benefits**

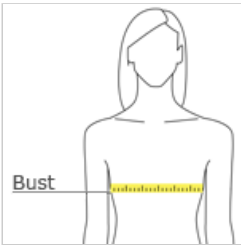
- Moisture-wicking
- Self-banded jewel neck
- Blouson sleeves with wide self-banded cuffs
- Rounded drop tail hem

**CARE INSTRUCTIONS**

Machine Wash Cold With Like Colors. Do Not Use Fabric Softener. Do Not Bleach. Tumble Dry Low. Remove Promptly. Cool Iron If Necessary.



**HOW TO MEASURE**



**BUST**  
Measure under the arm and around the fullest part of the bust with arms down, keeping tape horizontal.

**SIZE CHART**

	XS	S	M	L	XL	2XL	3XL	4XL
Size	2	4/6	8/10	12/14	16/18	20/22	24/26	28/30
Bust	32-34	35-36	37-38	39-41	42-44	45-47	48-51	52-55

**COLOR INFORMATION**

Please note: PMS code information is shown only when an exact match is available.



Deep Black  
PMS BLACK C



Insignia Blue



Rosewood  
PMS 4077C



Sage